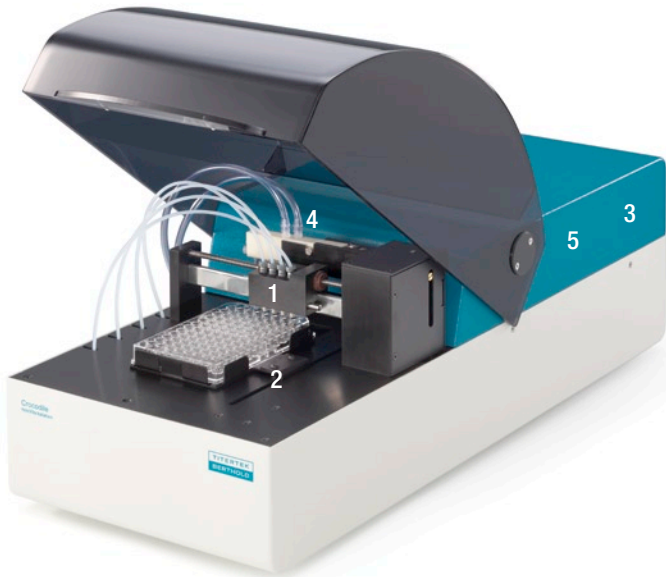


Crocodile miniWorkstation

Your personal assay automation



Crocodile is a compact, automated, high performance microplate assay workstation for low to medium throughput



Running your ELISA assays without automation requires an hour or more of your attention, making it difficult to plan other important activities while your assay is in process.

Crocodile 5-in-one provides the same functionality as *five individual instruments* in a footprint similar to a stand-alone-reader. Using Crocodile will reduce assay times by eliminating the need to move plates between dispenser, washer, incubator, shaker and reader. This allows you to perform other important activities.

- 1 Dispenser
- 2 Shaker
- 3 Incubator
- 4 Washer
- 5 Reader (5-in-one-version)

A compact workstation that fits anywhere

Crocodile is only 26.5 cm wide. With all reagent bottles placed to the left of the instrument, it requires no more than 40 cm of bench space – the width of a typical ELISA reader.

Walk away automation

The workstation is designed for truly unattended operation. Simply insert the sample microplate which includes standards and samples, choose the assay protocol and leave the work to Crocodile.

Easy hardware setup

All functional modules are housed in one compact box. Simply connect the unit with the power outlet and a notebook or desktop computer and you are all set for analysis. The tubing for wash and waste liquids is preinstalled, ready to be introduced into the wash and waste bottles.

Fast start

In everyday use, preparing to use Crocodile won't give you any headaches. Wash, waste, and reagent bottles are readily accessible, right next to the instrument. The instrument is ready for startup within minutes.

Easy maintenance and reliable service

Flushing of the system and routine replacement of the tubing is made easy by the intuitive design of Crocodile. Trained technical staff are available to help if needed, and after-warranty service agreements are available in most geographical locations – to ensure trouble-free operation over the lifetime of the instrument.

An open system

Crocodile will adapt to any 96 well assay. Crocodile's strength is its versatility. Not only can it be used as a powerful and flexible assay processor, offering unattended performance, its functions also can be used to replace individual devices such as plate washers and plate readers (5-in-one version).

Validation made easy

The validation performance of Crocodile is supported by our 3Q Package: Installation Qualification, Operation Qualification and Performance Qualification steps are performed according to detailed instructions provided. The results are documented in checklists according to the specific features of the instrument.

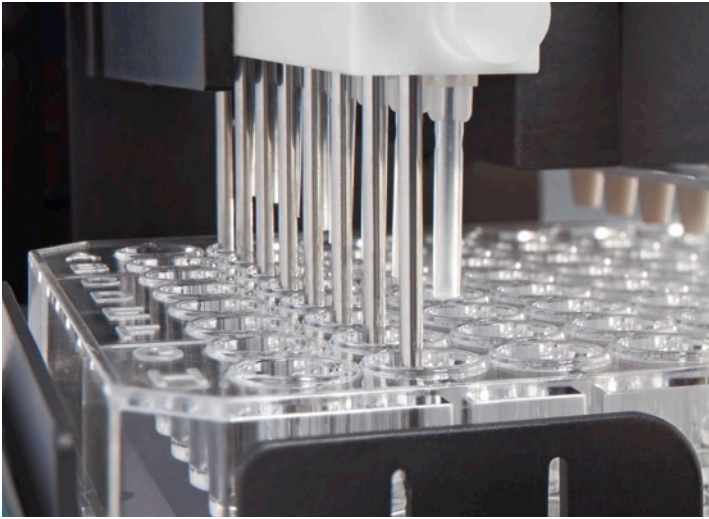
Applications

All life science applications requiring microplate dispensing, washing, shaking with or without incubation, and absorbance reading (5-in-one version). Processing of complete assays with or without reading such as: ELISA, LIA/CLIA, hybridization assays, arrays of antigen/antibodies/nucleic acid in microplates.

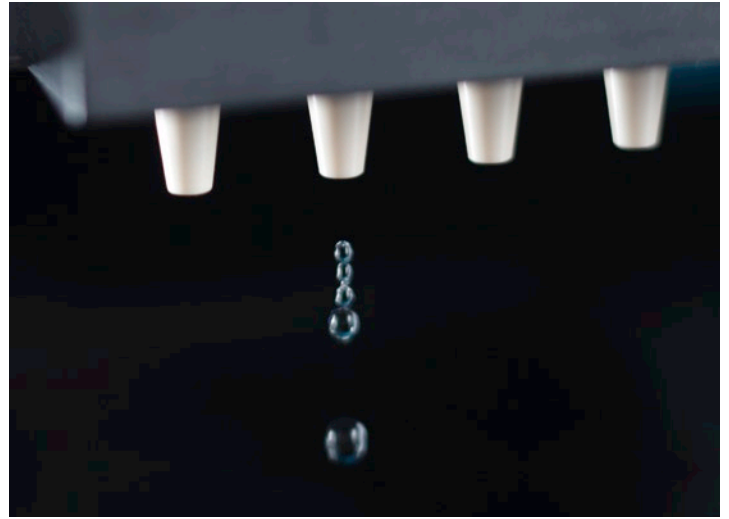
Windows PC-Software

The user friendly software easily adapts to any 96 well assay protocol. The five different functions can be in any sequence, one or several times each (for example one to four dispensing steps or multiple washing steps). Setting of each step is flexible and intuitive. Once you have chosen an assay protocol, the screen will show a graphic of the entire assay schedule, as it will be performed by Crocodile. The additional MikroWin software is available when quantitative and qualitative data reduction is needed.

Thoughtfully designed - manufactured with care



The 8-well parallel washer provides consistent washing performance



4 high-precision reagent dispensers



The assay reagents are kept securely in place by the flexible bottle holders. Buffer and waste bottles consume little bench space

Crocodile Technical Data

General Specifications	Sample format	1 x 96 well microplate (ANSI SLAS)
	Dimensions (HxWxD)	25.8 x 26.3 x 62.6 / 10.2 x 10.4 x 24.6 inch
	Weight	14.8 kg/32.6 lbs (5-in-one); 13.9 kg/30.6 lbs (4-in-one)
	Interface	USB interface
	Power Requirements	Desktop power supply and power cord. 100–240 V AC; 24 V DC/3.3 A
	Operating Temperature	10–35° C; 50–95° F
	Humidity	Up to 75 % (non condensing)
Incubator	Temperature Range	From ambient + 4° C to 55° C
	Temperature Stability	± 1° C across plate at 37° C
	Incubation Time	Programmable
	Temperature Monitoring	Yes
Reader (5-in-one-version)	Dynamic Range	0–3.0 OD at 450 nm
	Spectral Range	400–690 nm (pre-installed filters: 405, 450, 492, 620 nm)
	Filter Slots	8
	Reading Channels	8 independent photometric channels plus reference channel, mono and bichromatic reading
	Precision	< 1.5 % CV (0.01 to <0.5 OD)
		< 1 % CV (0.5 OD to <2.0 OD)
< 1.5 % CV (2.0–3.0 OD)		
Accuracy	± 0.01 OD or 2.5 % (whichever is greater)	
Dispenser	Type	4 independent precision pumps
	Volume Range	10–2000 µl
	Precision	< 2 % CV at 100 µl
	Accuracy	< 5 % at 100 µl
	Reagent Support	Any bottle or vial type can be attached
Washer	Manifold Configuration	Autoclavable 8 way manifold with 2 parallel needles
	Dispense Volume	25–1000 µl
	Wash Modes	Standard, overflow, soak, two-point, sweep
	Wash Buffer Capacity	3 x 1 l bottles for different wash solutions
	Waste Liquid Container	2 l bottle
PC Software Shaker	Shaking	independent linear motion 5–20 Hz
	PC Software	Crocodile Control Software for Windows allows creating and measuring assay protocols
Ordering Infos	11050010	Crocodile 5-in-one for automated processing of ELISA assays
	11050011	Crocodile 4-in-one for automated processing of microplate assays
	15560023	Mikrowin Module. Quantitative and qualitative data reduction package
	14000140	Absorbance TestPlate for Validation
	13500314	OQ/OQ/PQ Qualification package for Crocodile miniWorkstation
	18800410	Crocodile training at Titertek-Berthold. Duration: 1 day

Specifications subject to change without prior written notice.
For research use only. Please inquire for IVD versions.

Berthold Detection Systems GmbH
Bleichstrasse 56–68
D–75173 Pforzheim, Germany

Phone: +49(0)7231/9206-0
Fax: +49(0)7231/9206-50
contact@titertek-berthold.com
www.titertek-berthold.com

